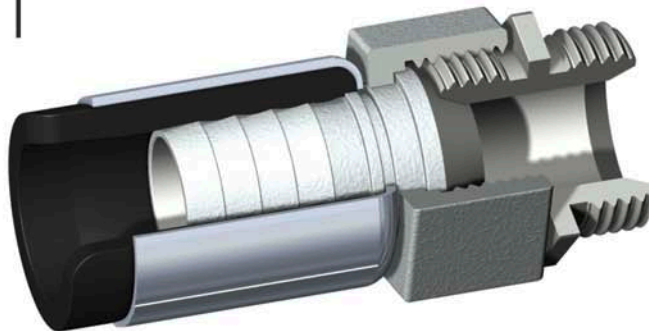
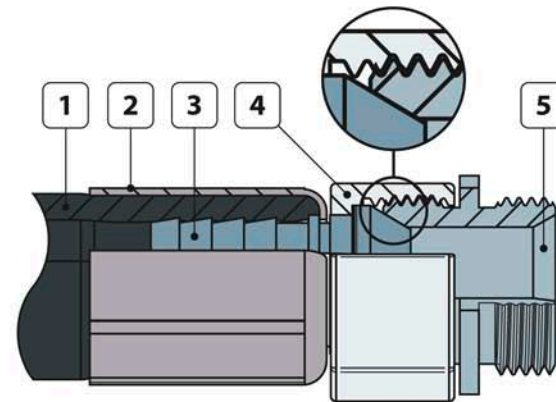


B

FMT V-TEC HOSE FITTING

1. Hose fitting
2. Crimp sleeve
3. Connector with sealing cone
4. Cap nut
5. Threaded adapter with sealing cone



The connector with sealing cone is press-fitted into the end of the hose.

The cap nut enables direct connection to other connectors.
No Eskimo-roll. No tedious hose winding required.